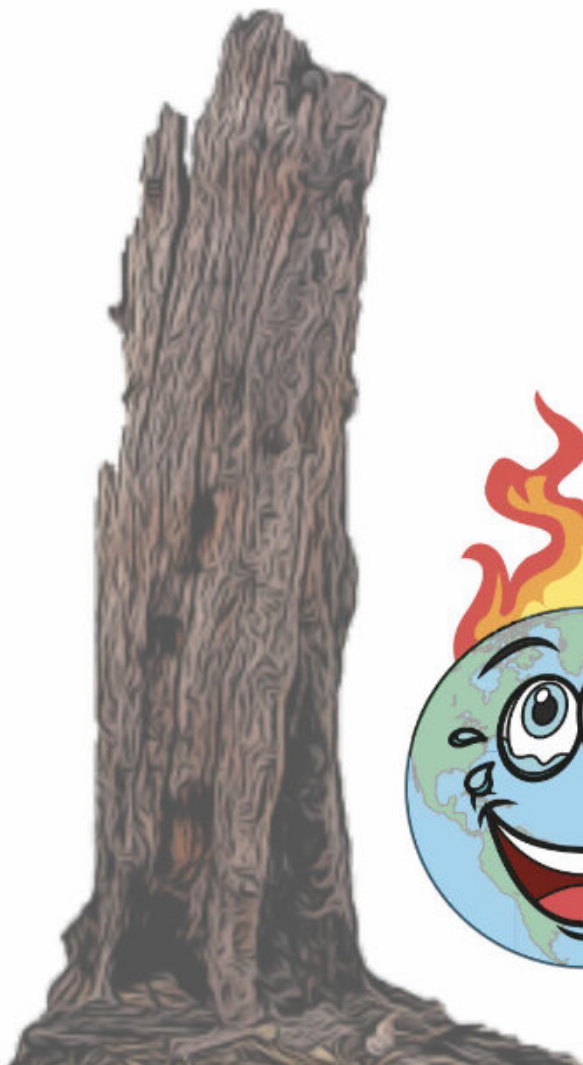




1 Home energy

Worksheets

1-3



FARCE!

Using Satire and Comedy to Promote
Climate Change Awareness



Worksheet 1

Group 1

Energy saving quick Q&A

Try to find the answer for a question that the other group is asking you, and surprise them with your questions!
Finish each other' jokes!

ASK

Answer

If I ride my bike twice...does that count as.....

What's the best motivation to save energy in your house?

Needless to say, I was shocked.

The light at the end of the tunnel has been turned off. Thank you and have a nice day.

- You're a unit of electrical energy, Harry
-.....

A guy phoned and asked if I was interested in switching to an alternative energy supply
-.....

Because they liked each other!

great electric bills!

What Do Wind Turbines Talk About?

I am rebranding computers' energy saving mode

Now I see the electric bills, and became afraid of the light.

Because I've vote for it

I have a joke on Bitcoin

What do you get when you pour Red Bull onto a clock?

Keeps me up at night

These are the darkest days of my life...

What did the baby light bulb say to the mommy light bulb?

Overusing electricity in you come is som much fun,,,

With a credit card!

I can't wait to see his face light up when he opens it





Worksheet 1

Group 2

Energy saving quick Q&A

Try to find answer for question that the other group is asking you, and surprise them with your questions!
Finish each other' jokes!

ASK

Answer

| | | | |
|--|--|--|--|
| I'm so much in debt, I can't afford to pay my electric bill... | I opened my water and electric bills simultaneously | RE-CYCLING | Nothing Special, They Just Shoot The Breeze |
| Why did the lights go out? | With great power comes.... | It's a power nap | A waste of time and energy |
| I bought my dad a refrigerator for his birthday. | What's the best way to charge a car battery? | I'm a watt? | Paying your own energy bill |
| Is your refrigerator running? | When I was younger, I was afraid of the dark. | That you can laugh all the way to the bank | Thank you, but I will stick with the food - I said |
| The fact that I can't turn my light off | Public Service Announcement: In order to meet the energy budget for 2022.... | I love you watts and watts! | But it requires so much energy to get it |





Worksheet 2

SIMPLE STEPS TO SAVE ENERGY

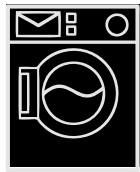
Make saving the environment your priority

Fill-in the gaps to make list of advices and discuss in group how to motivate others to follow each advice. Write your ideas below



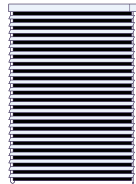
1 TURN OFF.....

.....
.....
.....



2 WNEH DOING.....

.....
.....
.....



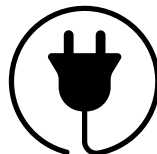
3 DURING..... BLINDS

.....
.....
.....



4 SHUT DOWN NIGHT

.....
.....
.....



5 UNPLUG NIGHT

.....
.....
.....



6 USE

.....
.....
.....





Worksheet 3

Markings on lamps - what do you need to know about the parameters?

Fill in the gaps

Whether you choose halogen or LED, on the product packaging you will find many symbols and markings that provide information about the characteristics of the selected type of bulb. Many people wonder how to compare the power that some types ofproduce with the power of a traditional incandescent bulb in order to maintain proper lighting parameters. The most common symbols you'll find on boxes and in product descriptions include:

-- expressed in watts (W). For many people, the reference point, in this case, is the traditional 100W incandescent bulb, so in order to compare, manufacturers of fluorescent lamps in addition to the wattage of their product often specify theof the incandescent bulb that corresponds to it, Example: a 10W LED bulb shines the same as a traditional 70W.....

-.....- different types of bulbs are dedicated to working in installations with different.....
If the product is marked with the symbol 230V, it means that it can be connected to a standard installation, if 12V - it is necessary to use a transformer,

-- expressed in (K). This is one of the most important parameters when choosing a bulb, which can shine with warm (below 3000K), neutral (3500-5000K) or cold (above 5000K) light. Warm light has a soothing and relaxing effect, neutral light reflects natural lighting, therefore it is chosen to illuminate rooms, while cold light facilitates concentration, hence it is often installed in offices and reading rooms,

- brightness of the bulb - or more precisely: the power of the..... This element of the bulb designation is specified in(lm). The more a bulb has, the brighter it will shine,

--. Expressed as a number from 1 to 100, informs us about the extent to which the bulb reproduces the natural colours of the illuminated objects. Products from the higher price range are usually characterized by a CRI of over 80, and for the best bulbs this indicator is close to 100,

-- given in thousands of hours. In the case of a standard incandescent bulb, it will usually be less than 1000 h, while LED bulbs are characterized by durability at the level of up to 25000 h. In addition to this parameter, there may also be information about the number of....., which also helps determine the durability and lifetime of the product,

-- otherwise known as energy efficiency class. It is indicated by letters and additional symbols. For example, a light bulb with the symbolwill be more energy efficient than one with the symbol.....

The highest power consumption characterizes products marked with the letter E.

Bulb wattage, incandescent bulb, Kelvin, energy efficiency, on and off cycles, life, voltages, lumens, A++, A, colour rendering index, LED bulbs, wattage, colour temperature, luminous flux, bulb voltage





Key Worksheet 2

SIMPLE STEPS TO SAVE ENERGY

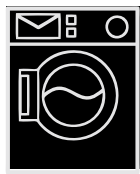
Make saving the environment your priority

Fill-in the gaps to make list of advices and discuss in group how to motivate others to follow each advice. Write your ideas below



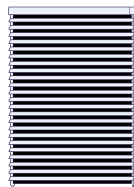
1

TURN OFF LIGHTS WHILE
LEAVING HOME/ FOR A
NIGHT



2

WHEN DOING LAUNDRY
REMEMBER TO FULLY
LOAD IT/USE LOWER
TEMPERATURE/SHORTER
PROGRAM



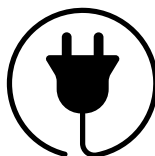
3

DURING THE DAY OPEN
YOUR BLINDS INSTEAD OF
TURNING ON LIGHTS



4

SHUT DOWN COMPUTER
FOR A NIGHT



5

UNPLUG SOME DEVICES
AROUND YOUR HOUSE
FOR A NIGHT



6

USE ENERGY-SAVING
BULBS





Key Worksheet 3

Markings on lamps - what you need to know about the parameters?

Fill in the gaps

Whether you choose a classic filament, fluorescent, halogen or LED, on the product packaging you will find many symbols and markings that provide information about the characteristics of the selected type of bulb. Many people wonder how to compare the power that some types of **LED bulbs** produce with the power of a traditional incandescent bulb in order to maintain proper lighting parameters. The most common symbols you'll find on boxes and in product descriptions include:

- **bulb wattage** - expressed in watts (W). For many people the reference point in this case is the traditional 100W incandescent bulb, so in order to compare, manufacturers of fluorescent lamps in addition to the wattage of their product often specify the **wattage** of the incandescent bulb that corresponds to it. Example: a 10W LED bulb shines the same as a traditional 70W **incandescent bulb**.
- **voltage** - different types of bulbs are dedicated to work in installations with different **voltages**. If the product is marked with the symbol 230V, it means that it can be connected to a standard installation, if 12V - it is necessary to use a transformer,
- **colour temperature** - expressed in Kelvin (K). This is one of the most important parameters when choosing a bulb, which can shine with warm (below 3000K), neutral (3500-5000K) or cold (above 5000K) light. Warm light has a soothing and relaxing effect, neutral light reflects natural lighting, therefore it is chosen to illuminate rooms, while cold light facilitates concentration, hence it is often installed in offices and reading rooms,
- brightness of the bulb - or more precisely: the power of the **luminous flux**. This element of the bulb designation is specified in **lumens** (lm). The more lumens a bulb has, the brighter it will shine,
- **colour rendering index (CRI)**. Expressed as a number from 1 to 100, informs us about the extent to which the bulb reproduces the natural colours of the illuminated objects. Products from the higher price range are usually characterized by a CRI of over 80, and for the best bulbs this indicator is close to 100,
- **life** - given in thousands of hours. In the case of a standard incandescent bulb it will usually be less than 1000 h, while LED bulbs are characterized by durability at the level of up to 25000 h. In addition to this parameter, there may also be information about the number of **on and off cycles**, which also helps determine the durability and lifetime of the product,
- **energy efficiency** - otherwise known as energy efficiency class. It is indicated by letters and additional symbols. For example, a light bulb with the symbol **A++** will be more energy efficient than one with the symbol **A**. The highest power consumption characterizes products marked with the letter E.





FARCE!

Using Satire and Comedy to Promote
Climate Change Awareness



CREATIVE EXCHANGE

innoventum



Co-funded by the
Erasmus+ Programme
of the European Union

"The European Commission's support for the production of this publication does not constitute an endorsement of the contents, which reflect the views only of the authors, and the Commission cannot be held responsible for any use which may be made of the information contained therein."
Project Number: 2020-1-UK01-KA204-079159